

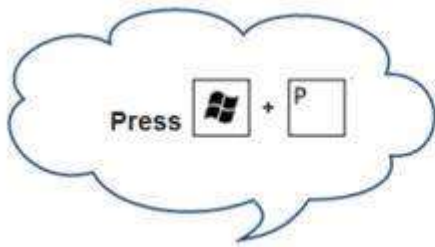
HDMI

To use HDMI, turn on the projector and press the “Laptop HDMI” button. Connect the following cables to the laptop:



To duplicate or extend the laptop screen to the projector:

While holding the “Windows” key, press and release the “P” key until Duplicate or Extend is selected then release the “Windows Key”.



To set the audio output, right click on the “Speaker Icon” in the Windows system tray then left click on “Playback Devices”.

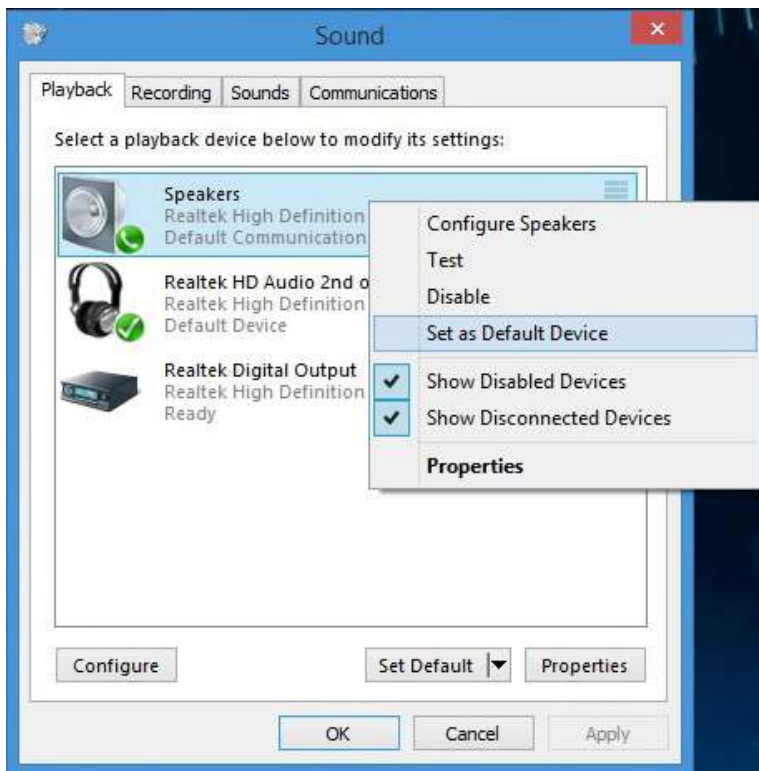


The following screen will appear. Note: There may be more than two devices.



Ensure "Speakers" has a green checkmark beside it.

If another device has the green checkmark, right click on "Speakers" and left click on "Set as Default Device".



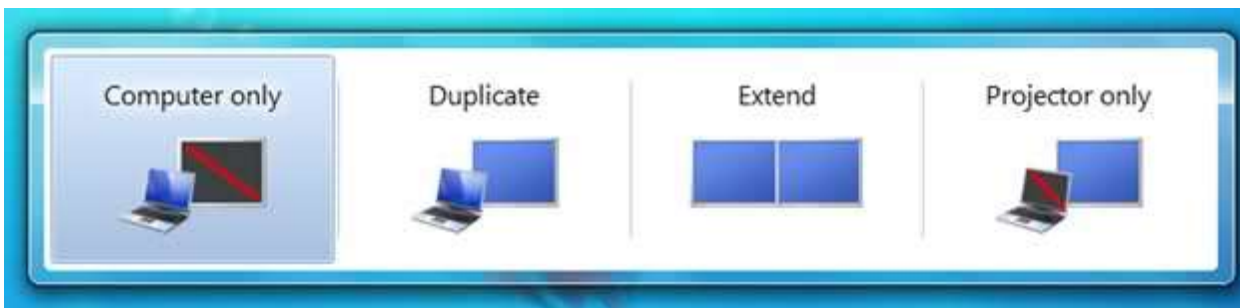
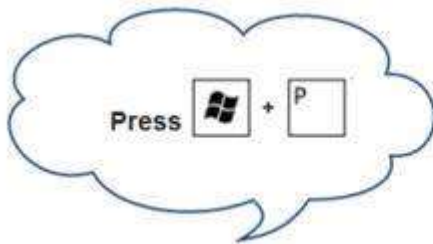
VGA

To use VGA, turn on the projector and press the “Laptop VGA” button. Connect the following cables to the laptop:



To duplicate or extend the laptop screen to the projector:

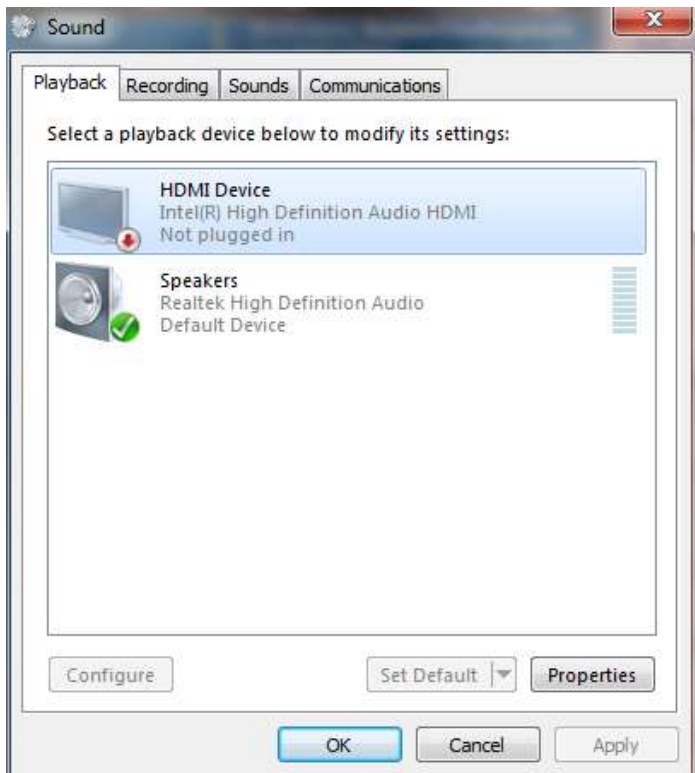
While holding the “Windows” key, press and release the “P” key until Duplicate or Extend is selected then release the “Windows Key”.



To set the audio output, right click on the “Speaker Icon” in the Windows system tray then left click on “Playback Devices”.



The following screen will appear. Note: There may be more than two devices.



Ensure "Speakers" has a green checkmark beside it.

If another device has the green checkmark, right click on "Speakers" and left click on "Set as Default Device".

