







PART 1

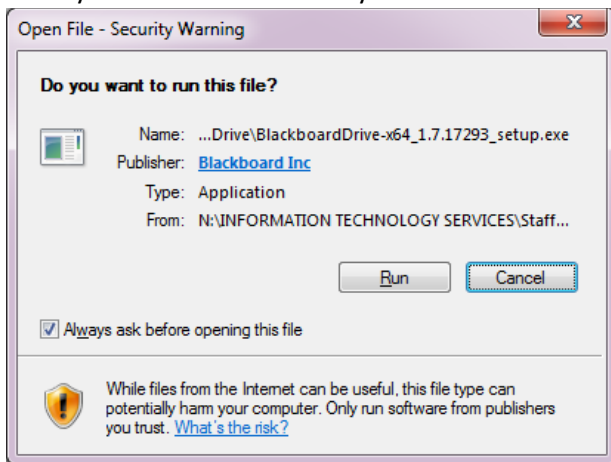
Installing Blackboard Drive

1) Before you install this software, please close all other software before continuing as this install will require a reboot of your computer at the end.

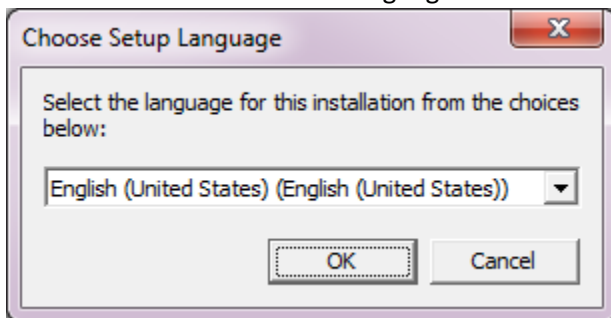
2) Click on the BlackboardDrive-x64_1.7.17293_setup.exe file

 BbDrive_Win_Release_Notes.pdf	9/14/2015 8:30 AM	Adobe Acrobat D...	515 KB
 Blackboard Drive 1.7.17115.dmg	9/14/2015 8:32 AM	dmg Archive	16,111 KB
 Blackboard_Drive_for_Mac_1.7_GA_Release_Notes.docx	9/14/2015 8:32 AM	Microsoft Word D...	419 KB
 BlackboardDrive-x64_1.7.17293_setup.exe	9/14/2015 8:31 AM	Application	66,839 KB
 BlackboardDrive-x86_1.7.17293_setup.exe	9/14/2015 8:32 AM	Application	65,435 KB
 CourseAddress.txt	3/3/2016 1:42 PM	Text Document	1 KB

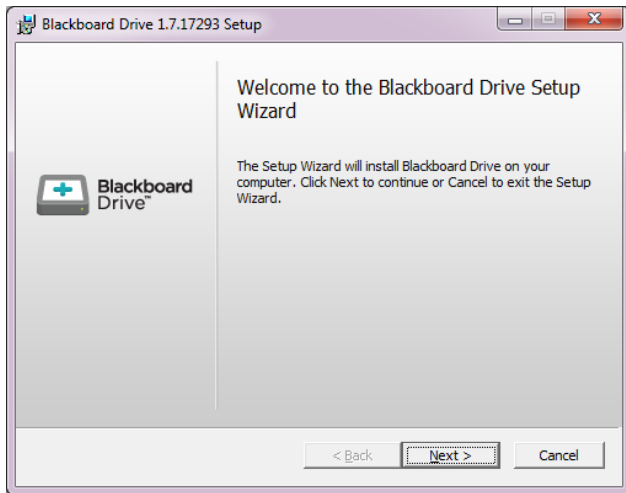
3) Once you doubleclick the file you will see this window open. Click on the “Run” button



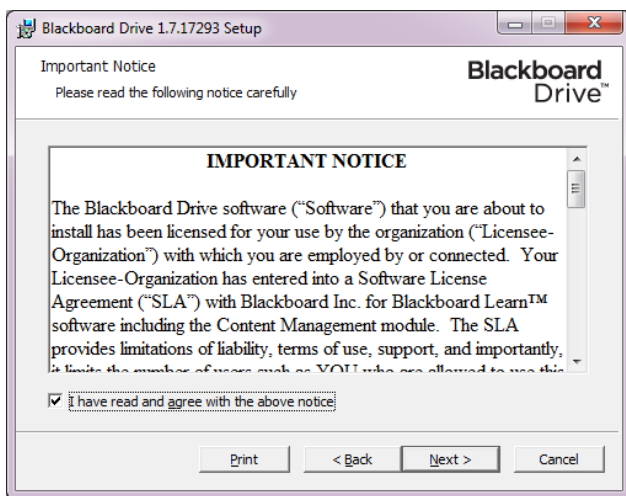
4) You will be asked to select a language. Click “OK” to continue



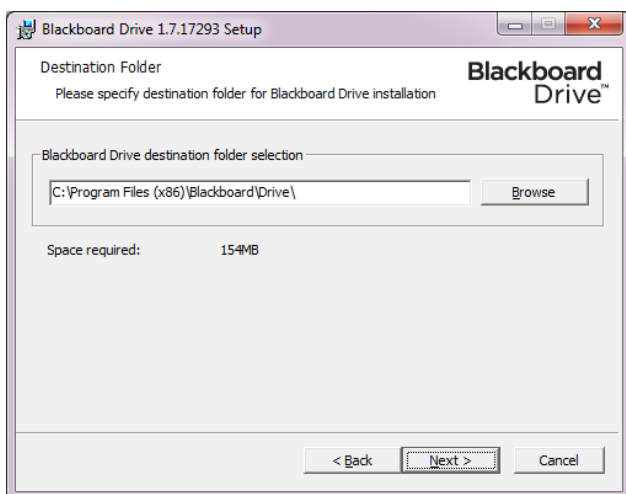
5) Click **“Next”** to continue



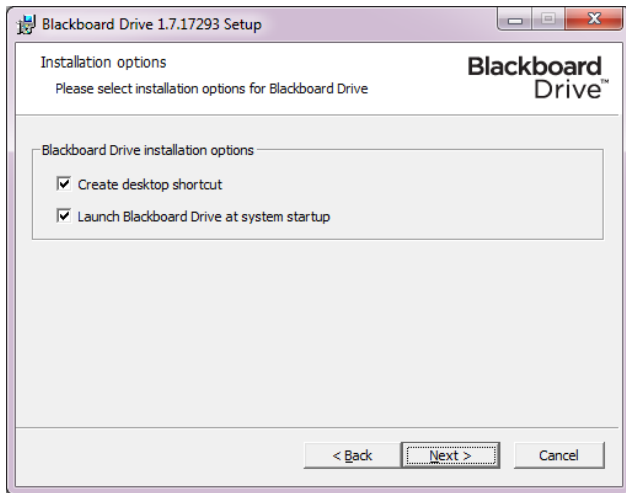
6) Check the box that you have read and agree to the notice. Then click **“Next”** to continue



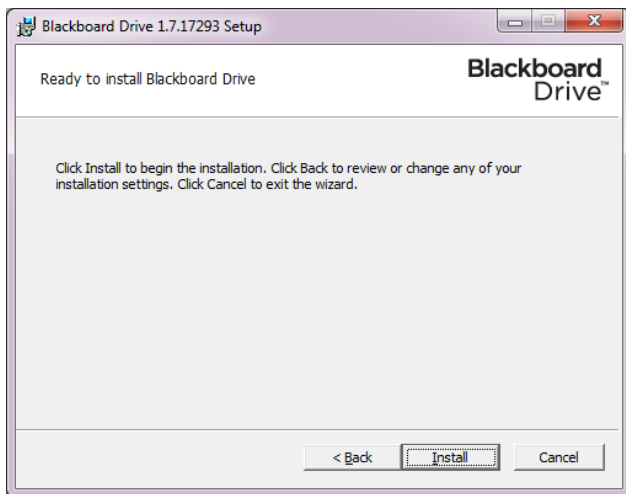
7) Click **“Next”** to continue.



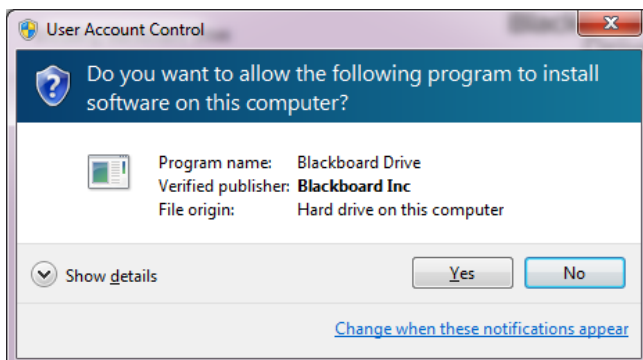
8) Leave both boxes checked and click “Next” to continue



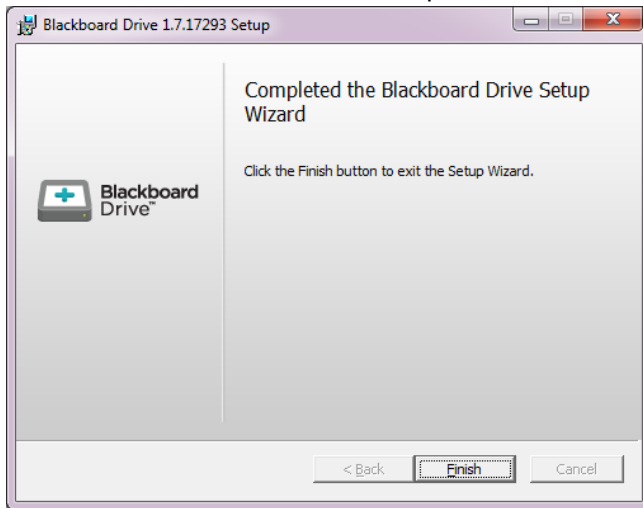
9) Click on the “Install” button now to start the software installation



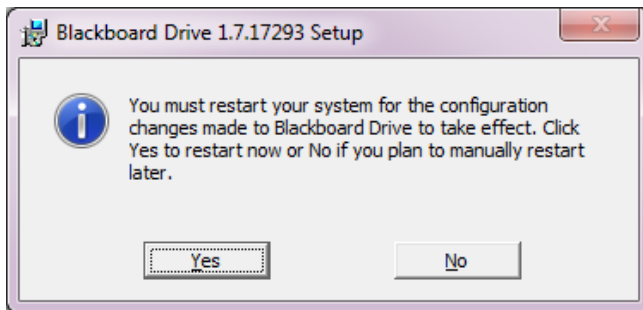
10) Click on the “Yes” button to allow the software to install



11) Click on the **“Finish”** button to complete the installation



12) Click **“Yes”** to reboot your computer



13) After the your PC reboots you will need to configure Blackboard drive. Please follow these steps in **Part 2**

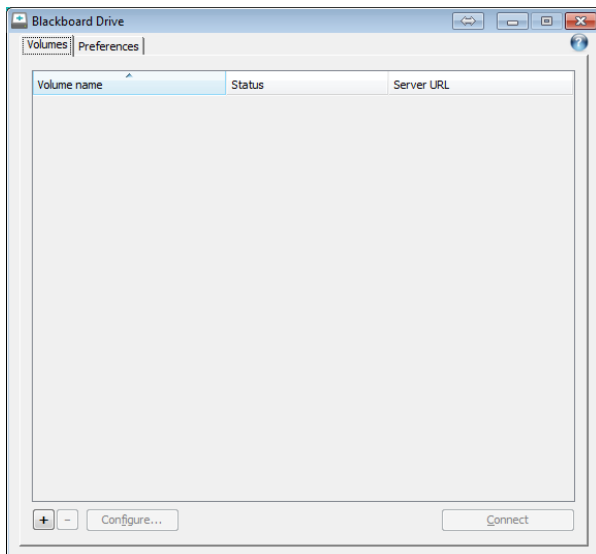
PART 2

Setting up your web folders for Blackboard Drive access

- 14) Open the Blackboard Drive software from the icon located on your desktop. If it does not open you will have to click on the same icon in the systemtray located to the left of the time in the bottom right of your desktop.



- 15) Click on the “+” on the bottom left of the **Blackboard Drive** window to create a new drive.



- 16) **Step 1.** In the box beside Volume name, type the name you would like to assign for your drive

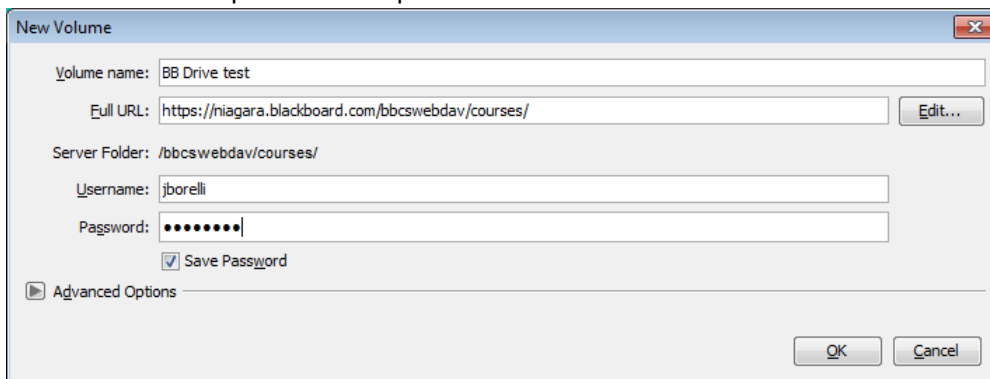
- 17) **Step 2.** Type the following address into the box beside Full URL.

“<https://niagara.blackboard.com/bbcswebdav/courses/>”

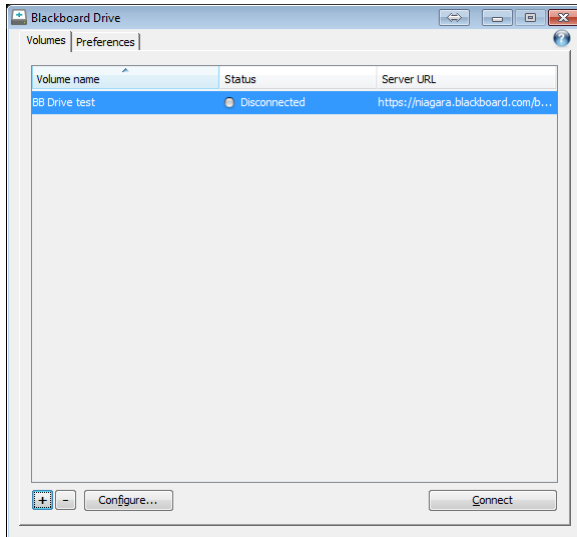
- 18) **Step 3.** Enter your blackboard **Username** and **Password**

- 19) Check the box beside “**Save Password**” below the username and password

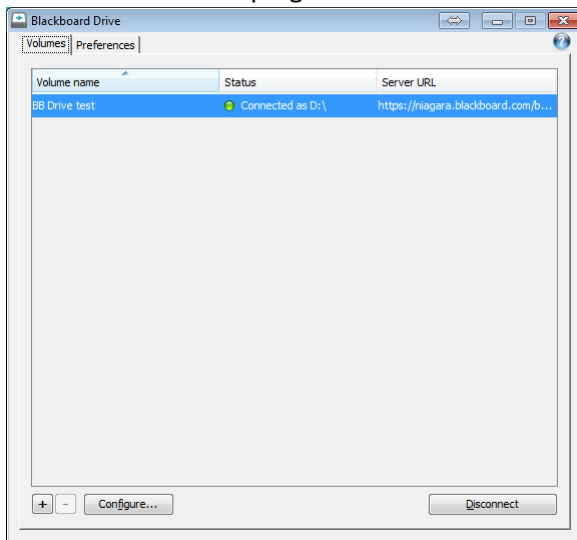
- 20) Click on **OK** to complete the setup



21) Click on the **“Connect”** button on the bottom right of the window



22) Your drive should now show as connected. Once it shows you as connected you may close this window by clicking the red box in the top right.



23) Open your computer icon to access your drives. You should now see a new network location with the name matching the volume name specified earlier.

