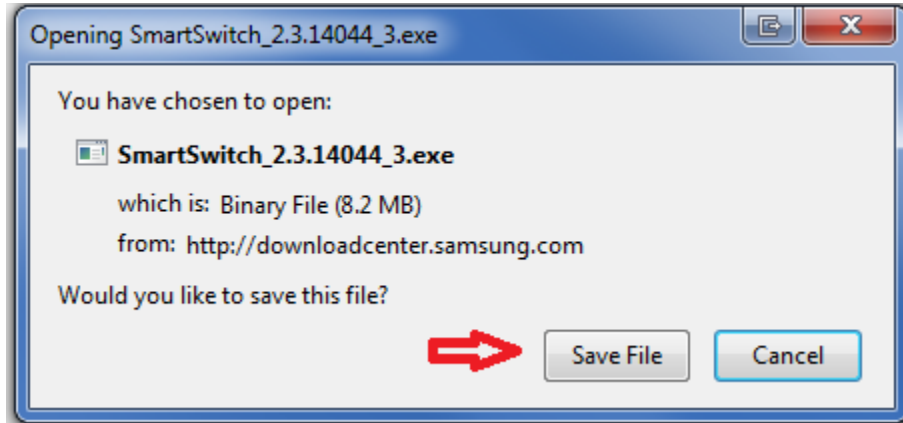
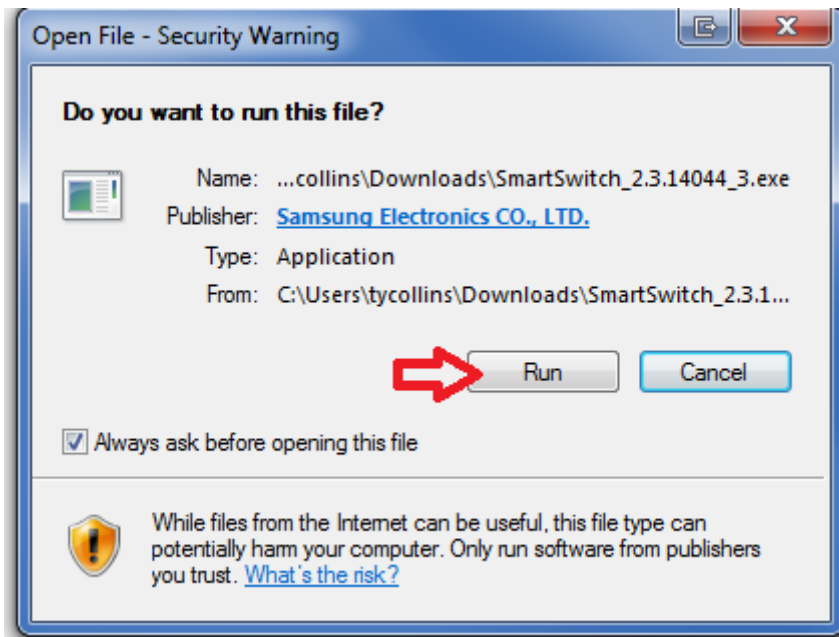


## Installing Smart Switch

- 1) Go to [www.samsung.com/ca/support/smartswitch](http://www.samsung.com/ca/support/smartswitch)
- 2) Click on View PC Version
- 3) Click Download for Windows
- 4) Click save file as seen below



- 5) Click run as seen below



- 6) Check I agree in both checkboxes as seen below then click I agree on the bottom, after this the program will be installed and you are done

# License Agreement




The use of Samsung Smart Switch is subject to the following Terms & Conditions. Kindly accept to proceed.

## Terms and conditions for using Samsung Smart Switch software

Samsung Smart Switch End User License Agreement

Read the Samsung Smart Switch End User License Agreement (the "Agreement") carefully before using Samsung Smart Switch software as it contains important information.

I agree. 

## Data conversion agreement

When transferring backup data, some files may be converted into a format supported by your Samsung device before being transferred.

I agree. 