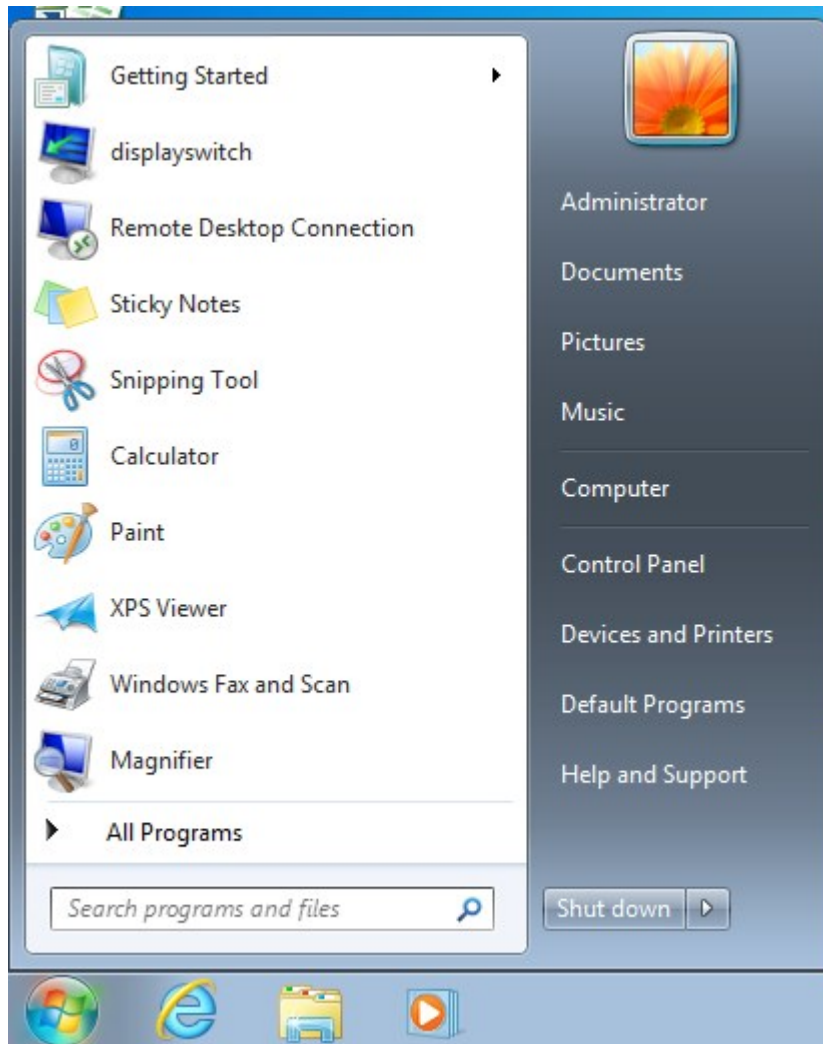


Begin by opening the start menu and selecting the **SEARCH BAR**



FIND THE PRINTER YOU WOULD LIKE TO CONNECT TO AT

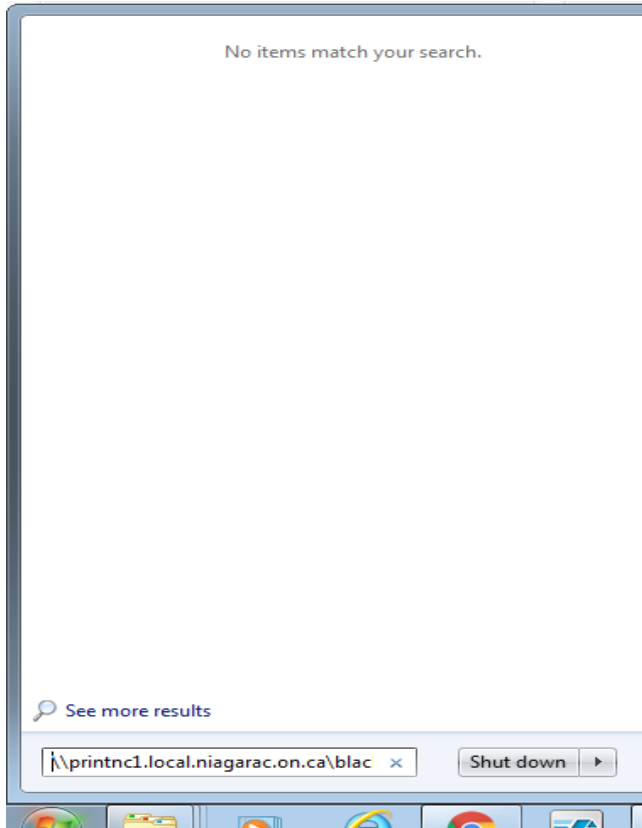
<http://www.niagaracollege.ca/its/self-help/articles/printing/#wireless>

Then type in the path

For Welland campus: Type \\printnc1.local.niagarac.on.ca**PRINTER NAME** into the **SEARCH BAR**

For NOTL campus: Type \\printnc1.local.niagarac.on.ca**PRINTER NAME** into the **SEARCH BAR**

Example Below for BlackandWhite Printer is: \\printnc1.local.niagarac.on.ca\Blackandwhite



In the next screen you will be asked for your Username and Password
Type nc**BLACKBOARD USERNAME** and your **BLACKBOARD PASSWORD**





You will see several screens telling you that the printer drivers are being downloaded and installed. Following that you will see the following screen showing your print queue. This means you have successfully installed the wireless printer

